



S39 HYBRID DESIGN

TABLE OF CONTENTS

S39 HYBRID DESIGN	3
SERVICES	4
REFERENCES	13
AWARDS	55
TEAM	56
PARTNERS	60
CONTACT US	63



S39 HYBRID DESIGN

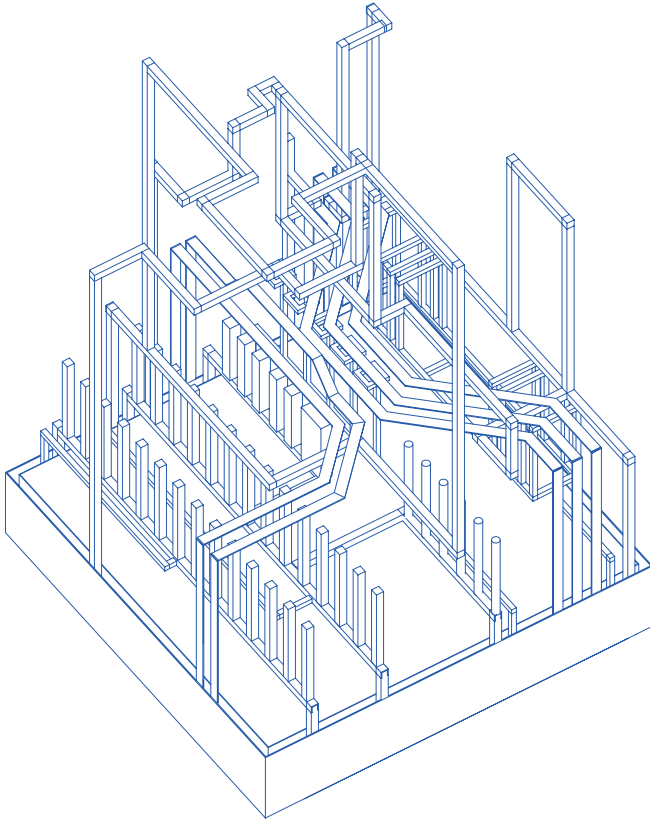
S39 Hybrid Design is a design studio that simultaneously combines the tools of architecture, object design, and conceptual art. It is dedicated to the comprehensive undertaking of complex artistic design and design implementation that fully fit into the architectural environment.

The studio's portfolio comprises special facades, complex exterior and interior design projects, art-centric public spaces, urbanistic projects, objects on an architectural scale, and relief-quality surfaces.

The diverse competencies and extensive partner network of the team – composed of designers and architects – enables the high quality implementation of location specific, customized architectural design projects. Customers generally include architects, interior designers, landscapers, investors, and general contractors.

Over the course of the past 13 years, the complex work methodology and numerous successfully implemented projects ensure the continuous presence of S39 Hybrid Design on the domestic architectural and design scene.

SERVICES



Professional consultation



Concept and Technology study



Implementation plan, manufacturing plan



Comprehensive project coordination



Expert architect's site supervision

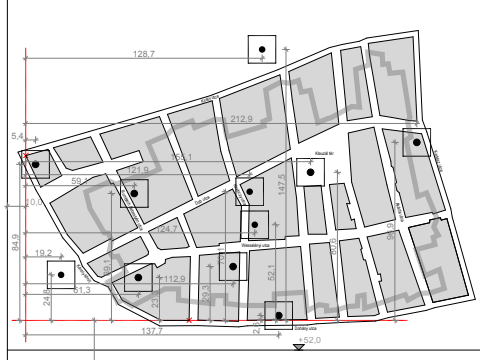
In accordance with customer requirements and the criteria of the professional project, the studio performs optimized design work with a design and technology perspective, depicting for all participants the design content that is associated with the given level of planning, from implementation all the way to operation.

CONCEPT AND TECHNOLOGY STUDY

S39 Hybrid Design is primarily engaged in the location specific genre; consequently, it performs unique developmental work on the occasion of each project. Accordingly, in the first phase of cooperation, a complex study is always undertaken, reviewing the given professional situation.

The document comprehensively reviews the customer's idea, information from partners, the system of relationships among them, the location, and the level of completion of the project. It is in light of these factors that visual and technological recommendations are generated that enable the customer – be it an architect, investor, or general contractor – to make secure decisions regarding the realistic direction of design investment.

-  needs survey
-  coordination with partners, from investor to manufacturers
-  target oriented analysis of project related information
-  technological and visual definitions of potential developmental paths
-  development of visual design plans to introduce conceptual directions
-  recommendation of specialist manufacturers
-  drafting of public procurement specific professional materials and technical descriptions
-  budget estimate



IMPLEMENTATION PLAN, MANUFACTURING PLAN

Following the concept and technology study, the studio's experts develop the contents, depending on planned use, adapting to the actual status of the project: the objective of the plans can be integration into some type of permit issuance or public procurement process, the manufacturing itself, or any other type of presentation.





PERMIT ISSUANCE PLAN

Intermediary level of detail plan documentation, with the objective of presenting the plan on a level that is suitable for undertaking architectural and other permit issuance processes. Its scale changes depending on the requirements. Includes the site plan, the presentation of the surroundings, the blueprint of the designed element and the view of that element from all directions (if necessary, by inserting it into the street view), as well as the visualizations.



TENDER PLAN, IMPLEMENTATION PLAN

Plan documentation drafted with a scale range of 1:50 to 1:10, with the objective of generating a design-level definition of the planned element, in the interest of recording architectural and other specific correlations. It contains the detailed blueprint of the planned element, its various views, sketches, the detailed drawings of its connections, its depiction in an unpriced description, the unpriced bill of quantities, budget, and technical description.



OPTIMIZED MANUFACTURING PLAN

Final technical documentation on the basis of previous plan phases, containing all precise manufacturing instructions. Its scale – depending on the situation – ranges from 1:10-1:1. Attached are the manufacturing files on the basis of which manufacturing is conducted under the supervision of the studio.



VISUALS

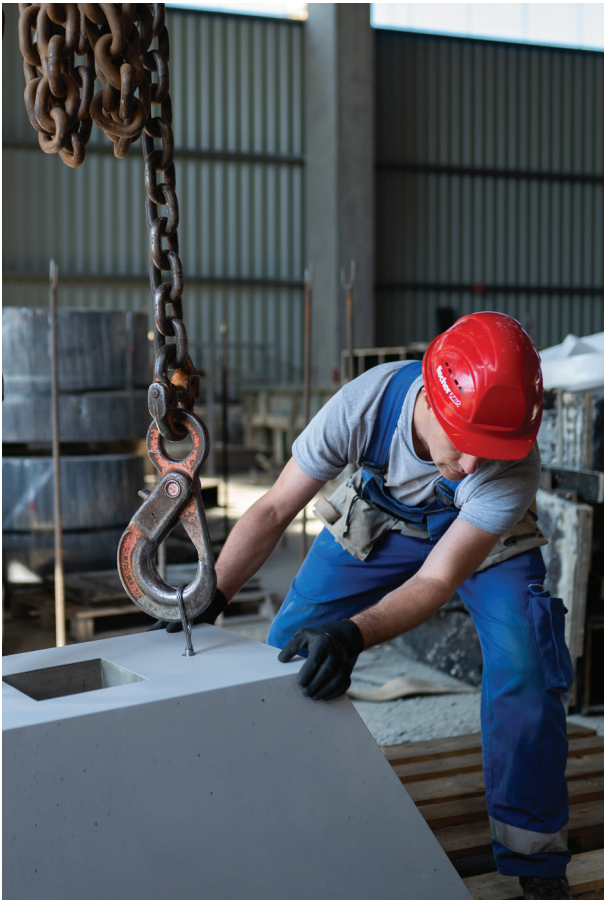
During any of the phases of plan implementation, there is an opportunity to create visuals.



SUMMARY PRESENTATION

Informative, comprehensible documentation presenting the given state of the plan, which can be easily understood by all broadly interpreted professional representatives who are involved in the project. If needed, it can be drafted in a version suitable for marketing purposes as well.





IMPLEMENTATION, MANUFACTURING

The professionals of S39 Hybrid Design provide comprehensive support for the implementation of location specific, individual elements:



The coordination of sector specific designers and contractor and manufacturing partners, and the optimization of work stages and phases that are based on one another



Manufacturing tracking, quality assurance, and corrections



Researching specialist manufacturers



The manufacturing of supplemental partial elements



Designer and technological supervision





EXPERT CONSULTING

The customer can utilize the diverse know-how and experience of the team within the framework of expert consulting. The studio provides professional support for architectural, design and technology related questions during any phase of design or implementation, irrespective of scale.

Alongside design consulting, the firm cooperates to respond to questions regarding the factory and on-location manufacturing of decorative concrete elements, siding technology solutions, ways of resolving the implementation of glass and metal facades and the recommendation of associated expert professionals.



REFERENCES

FACADE DESIGN

GRAPHISOFT PARK ENTRANCE BUILDING

In materials and appearance alike, the representative entrance building of Graphisoft Park is a spectacular structure among the park's buildings. Its robust character is a product of the glass facade graphic designed and implemented by S39 Hybrid Design. The studio has worked with the general designer team of Radius B+S Studio on several occasions, with great success.

The customer's order was aiming at the development of a graphic surface which emblematically reflects upon the innovative spirit of Graphisoft Park without disturbing the view from the offices. According to the design concept, spatial shapes were depicted on the flat surface, referencing the editing principle of Graphisoft SE's Archicad architectural software.



SPECIFICATIONS

- Design and supervised manufacture of 1000 m² variable glass facade graphics
- Maximum coverage by pattern of 12%
- Multi-layered 3D effect pattern development

- Modern bird protection
- Manufacturer specific technical specifications and implementation design materials
- Smooth implementation
- Cost effective, durable pattern



Location: 1031 Budapest, Záhony street 7./a

Year of implementation: 2017

Investor: Graphisoft Park Ingatlanfejlesztő Kft.

General architectural design: RADIUS B+S Kft.

Facade Graphic design and manufacturing lead: S39 Hybrid Design Kft.

Developer: OROSházaGLAS Kft.

Photo: Tamás Bujnovszky

Award: The New Property Developer of the Year, 2017; Budapest Építészeti Nívódíj (Budapest Architectural Award), 2018; Nomination Média Építészeti Díj (Media Architectural Award), 2018; Nomination Mies van der Rohe Architectural Award, 2019; Nomination BIG SEE Architectural award, 2019



FACADE DESIGN

LISZT FERENC ACADEMY OF MUSIC GYÖRGY LIGETI EDUCATIONAL BUILDING

Over the course of the development of the György Ligeti Educational Building of the Liszt Ferenc Academy of Music, a glass facade comprising the entire interior facade of the building took place. On the invitation of architect István Mányi, S39 Hybrid Design designed a surface that reflected the institution's contemporary musical activities. The pattern reflects the visual appearance of soundwaves, the sketch of a repetitive chord can be seen on the facade. The design process was accompanied by intense experimental work, in order to aid the tangible, material testing of colors and frequencies.



SPECIFICATIONS

- Design of 760 m² moire glass facade graphic with supervised manufacturing
- 20% pattern coverage
- Multi-layered colourful pattern development
- Lace curtain reminiscent shading pattern
- Modern bird protection
- Manufacturer specific technical

- specifications and production plans
- Smooth implementation
- Cost effective, durable pattern



Location: 1077 Budapest, Wesselényi street 52.

Year of implementation: 2011

Investor: Liszt Ferenc Academy of Music

General architectural design: Mányi István Építész Stúdió Kft.

Design of facade graphics and manufacturing supervision: S39 Hybrid Design Kft.

Partner designer: Zarf Design Kft.

Developer: Rákossy Glass Kft.

Photo: Dániel Ludmann, Gábor Kardos



COMPLEX ARTISTIC CONTENT

HARD ROCK HOTEL BUDAPEST

According to the intent of the investors, Hard Rock Hotel Budapest is a characteristic element of downtown Budapest. The perforated metal facade that includes the three storeys and the large sized printed glass facade of the narrow courtyard are included in the artistic touches of the hotel. S39 Hybrid Design developed the complex architectural and design solutions of the graphical contents that are associated with these elements. The studio's competent team of designers assisted the investor in the performance of both tasks.

Location: 1064 Budapest, Nagymező street 38.

Year of implementation: 2019

Investor: Rockwood Ingatlan Kft.

General architectural design: Stúdió'100 Építészeti Kft.

Interior design: Rosa-Violán Lázaro

Metal perforation of the facade, glass facade pattern, and implementation support: S39 Hybrid Design Kft.

Design, manufacture, and on-site implementation of metal facade covering: Alukonstrukt Kft.

Development of glass structure: Üveg-FémSzer Kft.

Glass manufacturing, glass printing: Jüllich Glass Holding Zrt.

Reinforced concrete structure: Swietelsky Magyarország Kft.

Award: The Year's Designed Hotel Project, 2018; Nomination The year's community space, 2020

Photo: Dániel Ludmann, Tamás Bujnovszky





FACADE DESIGN

HARD ROCK HOTEL BUDAPEST

Preserving the original architectural values of the Hard Rock Hotel Budapest building, the storeys that were developed over the hotel's main cornice received a contemporary, progressive covering for the facade. The metal cover panels lend a homogenous architectural appearance, thus crowning the building. The surface of the crown is composed of large rhombuses, on which capsule shaped perforations ensure that the hotel rooms retain appropriate views, while they sufficiently cover the private surfaces from the outside. For S39 Hybrid Design, it was an exciting project to work out the perforation graphics, requiring innovative spirit and contemporary designer technology.

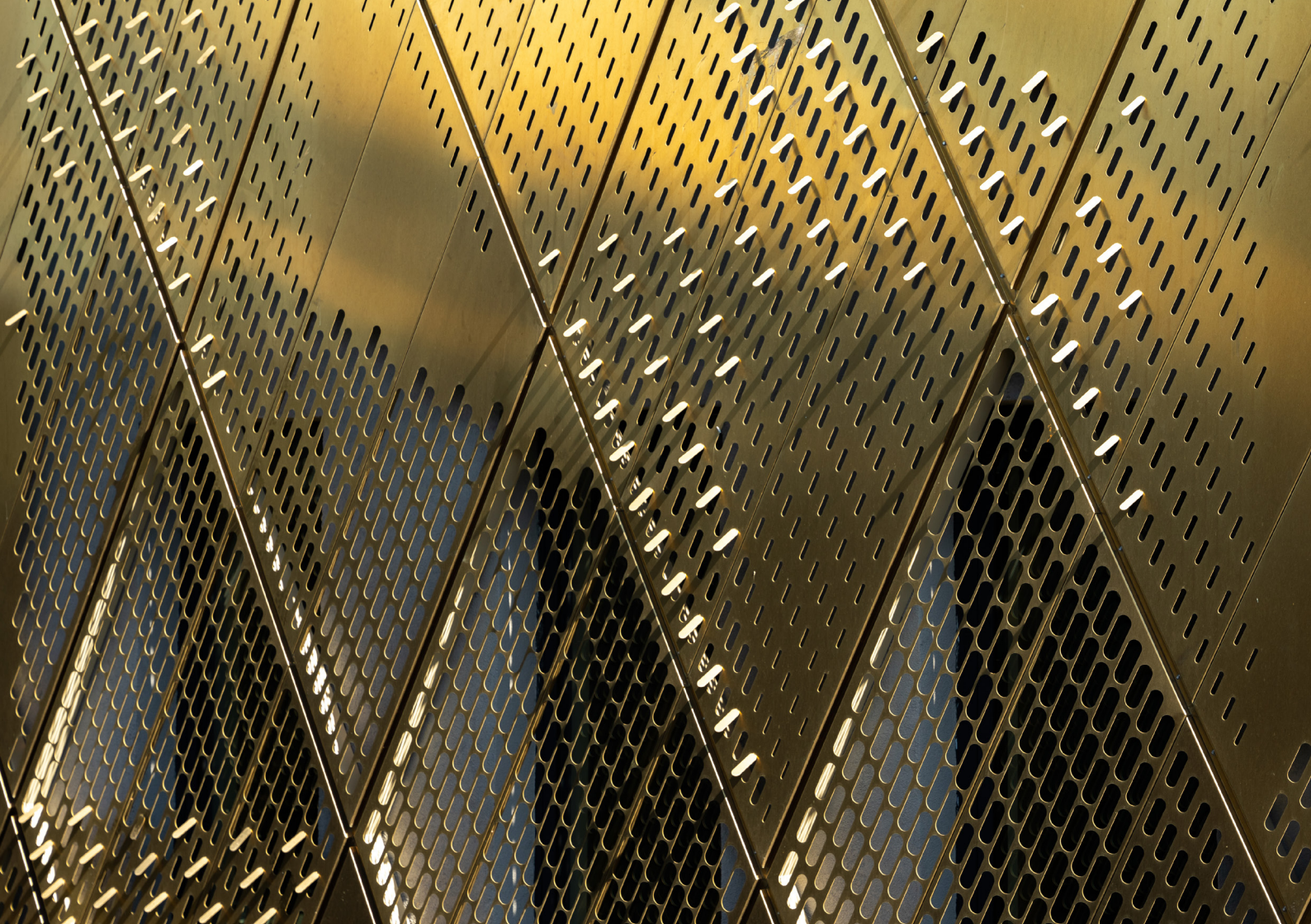


SPECIFICATIONS

- Design of 720 m² of perforated brass sheet facade coverings with supervised manufacturing
- On the facade, 62,000 qty surface perforations and associated cutting length of 10,000 running meters



- Design adapted to match existing manufacturer in accordance with a fixed budget
- Tight deadline, alongside mature general contractor agreements
- Drafting of manufacturing plans employing parametric programming



FACADE DESIGN

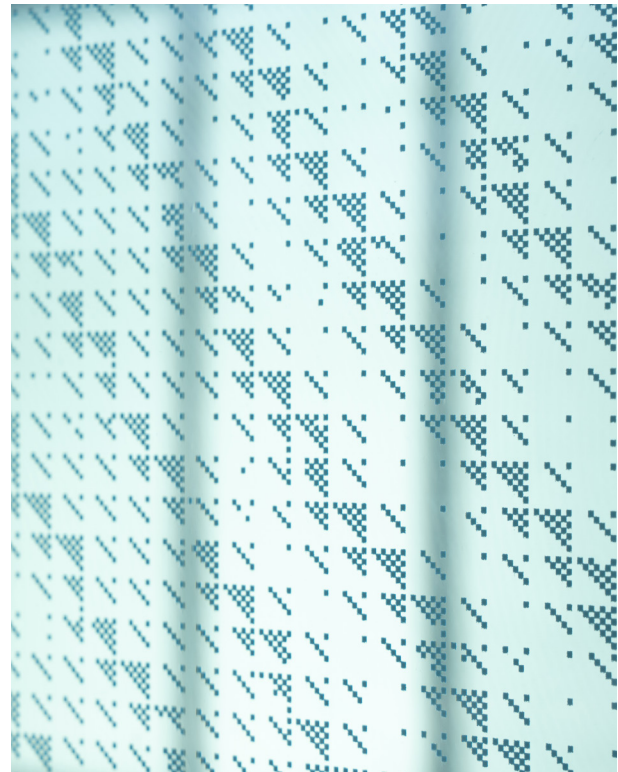
HARD ROCK HOTEL BUDAPEST

The design of the glass facade encircling the inner courtyard of the building was implemented in accordance with the plans of S39 Hybrid Design. A job reminiscent to the development of the crown was realized. The transparency of the hotel rooms that were situated opposite and close to one another demanded a creative solution; it had to be ensured that from the inside, the view and sunshine were at proper levels, while the ability of external spectators to spy into the rooms had to be mitigated. In the development of the pattern, a source of inspiration lay in the shapes and ridges of the Bakelite panels that have also defined the facade of the hotel. This is how the intersecting and interlapping lines became the foundation of pattern development.



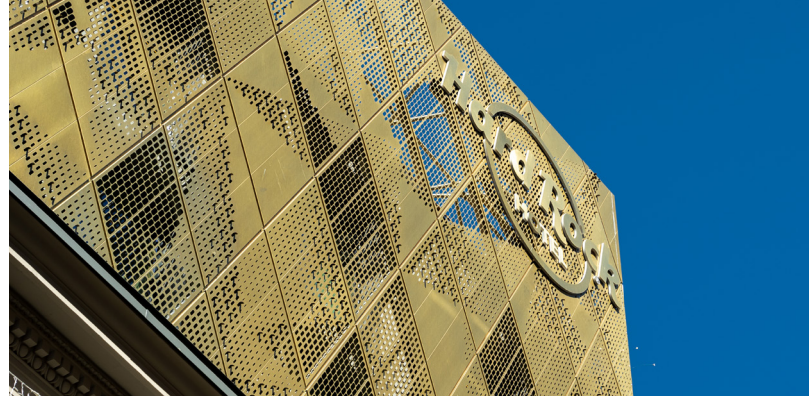
SPECIFICATIONS

- Design of graphical surface mitigating the ability of external spectators to see inside, with supervised manufacturing
- Manufacturer specific design
- Primary consideration was ensuring the view from the room



- Unique graphics developed from one mm pixels
- Unique ceramic dye printing technology
- Quick, smooth manufacturing process
- Sophisticated appearance







MEMORIAL

GHETTO MEMORIAL WALL IN DOHÁNY STREET

The Ghetto Memorial Wall of Dohány street was erected to commemorate the 70th anniversary of the holocaust. It is situated in the area of Budapest's former ghetto, the currently busy "party quarter." Consequently, the objective of the memorial wall is to slow time and expand the space for commemoration within the urban fabric. The architectural project required the development of the artistic content of the organisational unit, the design of the surface medium, and the comprehensive support of implementation and general contractor work. Because of its unique construction, many consider the Ghetto Memorial Wall a point of reference in the architect profession. It is a popular visitor location for city dwellers and tourists alike, being a stop for numerous city tours, but travel books also recommend it.

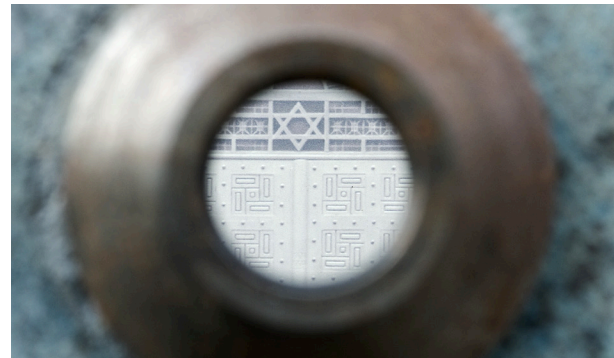


SPECIFICATIONS

- The design and manufacture of sculpturesque multi-layered siding application and their on-site installation
- The definition and support of the

manufacturing technology of on-site monolithic, high-strength, self-compacting concrete through the involvement of our partners

- Application of large size, tarnished concrete services for the first time
- A concrete map that encourages activity
- Surface integrated, programmable led wall
- Laser cut steel surface
- The organic cooperation of architectural and design content



Location: 1074 Budapest, Dohány street 32-34.

Year of implementation: 2015

Investor: Municipality of the 7th District of Budapest and the Association of United Hungarian Jewish Congregation (EMIH)

General architectural design: RADIUS B+S Kft.

Design planning and development: S39 Hybrid Design Kft.

Concrete technology: Építőkémia Magyarország Kft.

Photo: Tamás Réthey-Prikkel, Dániel Ludmann

Award: Nomination Budapest Architectural Award, 2015

אולם קדוה
והאכזריות האנושית
רבועים של קרקע
של מפלגת צלב הח

אתם, שעוצרים אל
קרבת השואה בה

את, הדליקי נר ביונה
אתה, קח חלק בתפ
הגידו את מזמור הת

מזמור כ"ג בטפר הר
מזמור לדוד ה' רעי
כי אלך בגיא שלמות
ראשי כוסי רינה: אר



1. Bóg jest miłością
2. Bóg jest miłością
3. Bóg jest miłością
4. Bóg jest miłością
5. Bóg jest miłością
6. Bóg jest miłością
7. Bóg jest miłością
8. Bóg jest miłością
9. Bóg jest miłością
10. Bóg jest miłością
11. Bóg jest miłością



COMPLEX ARTISTIC CONTENT

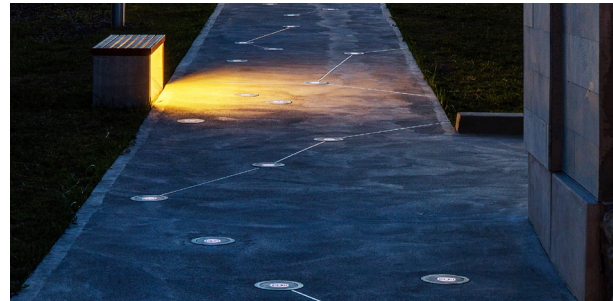
MEMORIAL GARDEN OF OLASZLISZKA

Tokaj-Hegyalja's religious sites are connected by a network of pilgrimage routes. One stop along this route is the Memorial Garden of Olaszliszka, developed in the area of the former synagogue. Over the course of the reconstruction, by connecting with architectural concept ideas, S39 Hybrid Design was asked to create an experience which offers emotional support to pilgrims, allowing them to understand the history of local Jews. The surface of the square is woven through by a glowing star map. The map shows the position of the stars during the day when the Jewish population was forcibly hauled off from the area. The elements of the star map react to the steps of pilgrims with active light phenomena. The one-time, remaining Torah Ark received a delicately worked concrete relief, lit by prayer text during twilight. On the opposite wall, the names of former resident families are kept among metal votive candle holder elements. The visitor hears the sounds of a service at the temple, recorded before the war, including the singing of the last resident rabbi who had lived there.



SPECIFICATIONS

- The creation of a 15 minute long experience with the tools of design, through integration into the environment of a memorial
- The application of the 60 concrete square tiles as a star map
- Special, hidden speaker
- Lighted Torah Ark curtain
- The data visualization map of surrounding areas
- 60 unique votive candle holders
- Stainless steel bell
- 3 unique benches



Location: 3933 Olaszliszka, Kossuth Lajos street 13.

Year of implementation: 2016

Investor: Unified Hungarian Jewish Congregation (EMIH)

General architectural design: Örökségvédelmi Tervező és Szolgáltató Kft.

Design planning and development: S39 Hybrid Design Kft.

Photo: Tamás Bujnovszky

Award: Architizer A+ Awards Special Mention, 2019

וַיִּכְתֹּב מֹשֶׁה אֶת
הַתּוֹרָה תְּלֹמֶת וַיְהִי
אֵל הַכּוֹתֵם בְּיַד
הַשָּׂאֵלִים אֶת אֲרֹן
בְּרִית יְהוָה וְאֵל כֹּל
זֶקֶן יִשְׂרָאֵל
וַיִּקְחֵם כְּחֹבֵי
לִכְסֹת אֶת הַשִּׁירָיִה
וְהָיָה לְמִנְחָה אֶת
בְּבֵי יִשְׂרָאֵל שִׁירָיִה
בְּיָמֵיהֶם לִמְנוֹחַ תָּהִי
לִי הַשִּׁירָיִה הַזֹּאת
לְפָנֶי בְּבֵי יִשְׂרָאֵל



PUBLIC SPACE DESIGN

URBAN EDUCATIONAL TRAIL ON SALGÓTARJÁN'S BESZTERCE SQUARE

The Beszterce square housing project is one of the oldest and largest panel building residential zones of Salgótarján. Its public spaces were getting renovated via a reconstruction effort initiated by the local government. In accordance to the intent of the general contractor, a space that is actively connected to the history of the surrounding area has been created. The S39 Hybrid Design designed and implemented an urban educational trail that became integrated into the architectural content. This project – unique in Hungary – is a good example of how a public space can be made informative in a simple and contemporary manner.



SPECIFICATIONS

- Integrated design content within an architectural environment – paving stone, bench, supporting wall, drinking fountain
- Depiction of local flora, fauna, and archeological finds

- The application of the MUKI Light lighted paving stone, developed by S39 Hybrid Design
- Professional preparation of local general contractors for the quality implementation of the monolithic decorative concrete support wall, along with associated manufacturing technology guild and on-site guided tour of the process, job training



Location: 3100 Salgótarján, Beszterce square

Year of implementation: 2018

Investor: Salgótarján County-Level City Municipality

General designer: indelab Kft.

Landscaping: Landspect Kft.

General contractor: BDF Bodnár Daru-Földmunka Építőipari és Kereskedelmi Kft.

Design and implementation of educational trail:


S39 Hybrid Design Kft.

Educational trail content provider: Novohrad-Nógrád Geopark Nonprofit Kft.

Photo: Benedek Bognár and Zsuzsanna Simon

Award: Engineered facility of the year, 2018;

Finalist Média Építészeti Díja (Media Architectural Award), 2019



Ez az andezit a Geopark egyik különleges kőzete, mert nem szárazföldi, hanem egy vízalatti vulkanizmus során ömlött a tengeraljzatra. Az igen gyors lehűlés miatt a kőzet üveges szerkezetű, ásványok szabad szemmel szinte nem is láthatók benne.

YENŐCS ANDEZIT





PUBLIC SPACE DESIGN

DESIGN CONCRETE SURFACES AND CONCRETE OBJECTS ON SZÉLL KÁLMÁN SQUARE

Széll Kálmán square is one of the busiest traffic hubs of Budapest, the renovation of which has become past due and necessary to be undertaken by the city. S39 Hybrid Design was invited to design and implement the design concrete surfaces and concrete objects of the square from Építész Stúdió, the general designer. Over the course of the design process, the preservation of the characteristic traits of the location's objects was given special attention, as well as the creation of a kind of a metropolitan intimacy via the tactile concrete surfaces.



SPECIFICATIONS

- Large sized on-site concrete surfaces
- A reconceptualization of the clock's form and emotional content
- The creation of Budapest's "stone map" as of 1823 on the front side of the metro building

- A visual depiction of the former Zugliget tram on the wall of the service building
- On-site formwork applications
- Concrete technology guide for the on-site development of special surfaces
- The employment of weathered and structured concrete surfaces on a large scale



Location: 1024 Budapest, Széll Kálmán square

Year of implementation: 2016

Investor: Budapesti Közlekedési Központ Zrt.

Customer: KÉSZ Zrt.

General architectural design: Építész Stúdió Kft.

Design, development and implementation of concrete surfaces:

S39 Hybrid Design Kft.

Sponsors: Meva Zsalurendszerek Zrt., SzeBeton Zrt.,

Photo: Márk Mervai, Gergely Besenyei



Széll Kálmán tér

Széll Kálmán tér

Széll Kálmán tér



COMPLEX ARTISTIC CONTENT

LIGHTWAVE

In addition to comfortably serving passenger traffic, the new passenger pier of Ferenc Liszt International Airport also contributes to the day-to-day operation of the airport from a design aesthetics perspective. S39 Hybrid Design was requested to design and implement the wall steel panel installation over the entrance of the corridor that connects the building units. The design process of the element was inspired by one of the strengths of Hungarian tourism, thermal waters, as well as the experience of flight. Composed of sinuous steel panes, the LIGHTWAVE installation evokes the vision of water surface as seen from above. The visual elements are also lit by natural and artificial light alike, creating a constant interplay of light.



SPECIFICATIONS

- Optimization of ease of implementation and installation
- Easy to maintain
- Design element with 30 m² area

- 375 m long wave elements
- Play with natural and artificial light
- The installation never presents an identical appearance



Location: Ferenc Liszt International Airport

Year of implementation: 2020

Investor: Budapest Airport Zrt.

Interior design and development: DVM Group Kft.

General contractor: MARKET Zrt.

Wall steel panel installation concept and visuals: S39 Hybrid Design Kft.

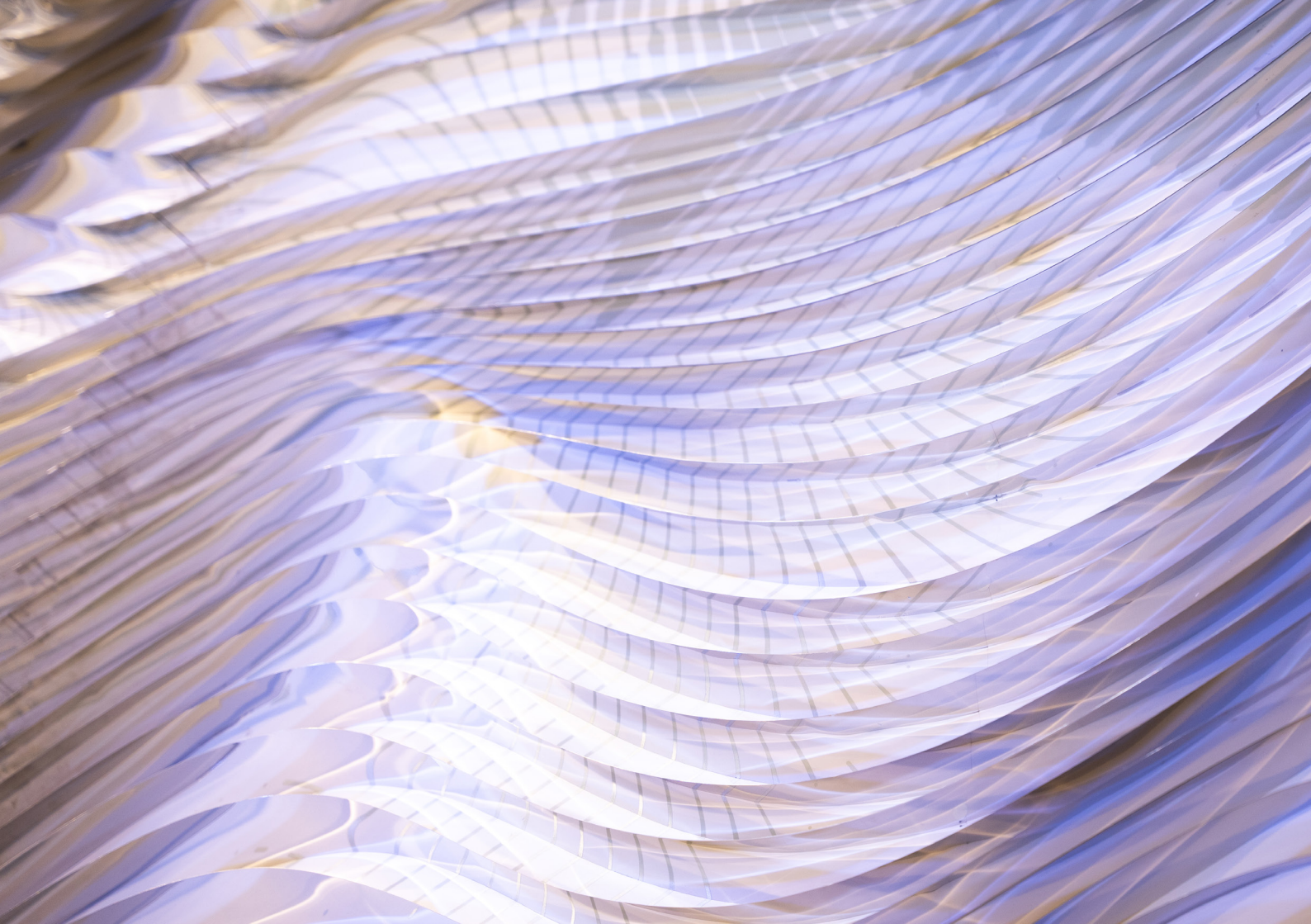
Wall steel panel installation implementation: Nagton Bt.

Wall steel panel installation lighting implementation:

Meanwhile Lights

Photo: Dániel Ludmann

Award: Nomination Public space of the year, 2020



COMPLEX ARTISTIC CONTENT

GRAPHISOFT WORLD MAP

Graphisoft World Map is a sound reactive, LED-lighted installation that depicts the locations of the offices of Graphisoft SE software development company, evoking the peculiar aspects of digital products that are developed by the company. The world map is made of a durable, tough material, while its graphical language reflects the technology of the present. The contemporary artistic content is hosted inside the lobby of building “G” at Graphisoft Park.



SPECIFICATIONS

- Dialogue with the mosaic situated opposite the map
- Actual topographic data
- Laser engraving, sandblasting
- Rust free, magnetisable steel surface
- Polycarbonate pillars
- Sound reactive LED lighting



Customer: Graphisoft SE
Interior design: Demeter Design Stúdió
Design and development: S39 Hybrid Design Kft.
Partner developer: Prop Factory Kft.
Sound reactive electronics: Optin Kft.
Metalwork: Attila Hrabovszky
Glass work: Attila Pataky
Laser engraving: Multigráf Stúdió Bt.
Polycarbonate machining: Limes Model Kft.
Water and laser cutting: Woldem Kft.
Sandblasting: Mattfény Bt.
Plotting: Színmix Kft.
Polycarbonate engraving: V+R Címfestő Kft.
Photo: Dániel Ludmann



DUBLIN

LONDON

AMSTERDAM

BRUSSELS

PARIS

GENEVA

MILAN

VENICE

BARCELONA

MADRID

LISBON

ALCIERS

RABAT

BERLIN

INTERIOR DESIGN

KAPÁS21 LUXURY CONDOMINIUMS

Kapás21 is a premium category condominium, built on one of the last empty lots in downtown Buda. The lobby of the building was designed by S39 Hybrid Design. As the customer intended, each detail of the space evokes the atmosphere of a hotel lobby: the interior, the coverings, the way light is employed, as well as the wall-to-wall carpeting of the hallways that radiate from the lobby. A space comes into being that makes residents and visitors alike spend time within it. They can take a seat and spend even longer periods of time inside the lobby. The small, multi-function foyer became a comfortable space through carefully chosen shapes, materials, and colors. It was a primary consideration when formulating the interior design plan of Kapás21 luxury condominium to build up a complex space from delicate details.



SPECIFICATIONS

- Complete interior design work of 710 m² public space of condominium
- Effective cooperation with real estate developer environment

- The integrated depiction of the branding elements of the building within the interior design
- Evoking a private, home-like atmosphere within the community space through the tools of architecture



Location: 1027 Budapest, Kapás street 21

Year of implementation: 2019

Investor: Cordia Global 1. Ingatlanfejlesztő Részalap

General designer: FBIS Építésműterem Kft.

Interior design: S39 Hybrid Design Kft.

General contractor: Pedrano Construction Hungary Építőipari Kft.

Photo: Dániel Ludmann

Award: Residential Property Development of the Year, 2018



LİPOKAS
BİREKLER

INTERIOR DESIGN

M60 HYBRID HOME

A sense of space and high degree of utilization can be created even inside a small apartment through well considered and complex interior design solutions. Over the course of the creative work, S39 Hybrid Design endeavoured to bring out as much as possible from the small apartment, “increasing” its size. As this was not possible in square meters, the apartment “expanded” in cubic meters: play with wall surfaces and an effort to move higher in the space made this downtown apartment of 60 m² more comfortable and spacious. Elements were created that can be used in a multifunctional manner, according to the requirements of the unit owners. All this resulted in a logical allocation of space and enabled the apartment to transform. This way, the various elements became interconnected, like pieces in a construction play set.



SPECIFICATIONS

- Sense of spaciousness in a small apartment
- Spaces that can be utilized in a multifunctional manner
- Custom designed furniture

- Furniture in lieu of walls
- Hidden storage capacity
- Unique, hand-painted, led-lighted traffic map on the wall
- Home office and home school compatible



Location: Budapest, II. district

Year of implementation: 2020

Investor: Balanced Engineering Kft.

Designer: S39 Hybrid Design Kft.

Electrician: Green River Kft.

Carpentry work: Asztalosmánia Kft.

Concrete kitchen counter: Krausz High-Tech Stone Kft.

Patterned glass panels: LUMINARI Glass

BKK map: Richárd Orosz

Photo: Dániel Ludmann, rílmelós



CONCRETE SURFACE

TRAKTOR FARMFOOD RESTAURANT

The dishes of Traktor Farmfood Restaurant are composed of fresh, colourful ingredients, the menu is associated with the realm of farming, which is what engendered the requirement that the large sized, seamless side wall of the establishment should receive a design that is related to the concept. On invitation of the interior designers, S39 Hybrid Design designed a surface that depicts the rustic nature of cultivated land as seen from above, in an associative way.



SPECIFICATIONS

- custom concrete sculpture covering 1.7 x 14.5 m wall surface
- Development of experimental surface structures, in spots with a weathered coating and metal inserts

Location: 1051 Budapest, Zrínyi street 2.

Year of implementation: 2018

Customer: Fish and Friends Kft.

Interior design: MINUSPLUS Generáltervező Kft.

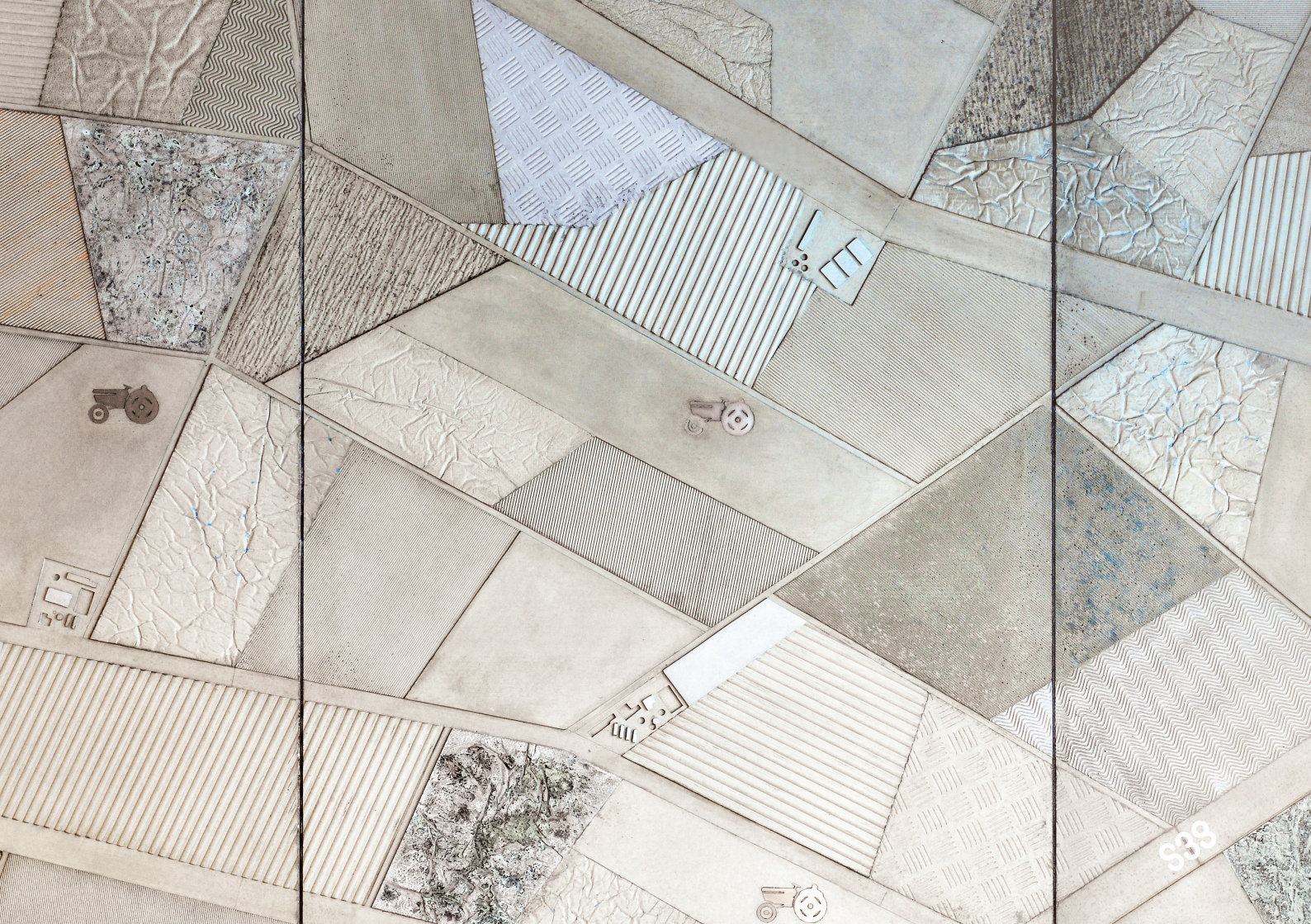
Design planning and implementation: S39 Hybrid Design Kft.

Contractor: STRABAG Magyarország Kft.

Photo: Attila Glázer

50





538

LUMINARI GLASS

EXCLUSIVE GLASS PRODUCT

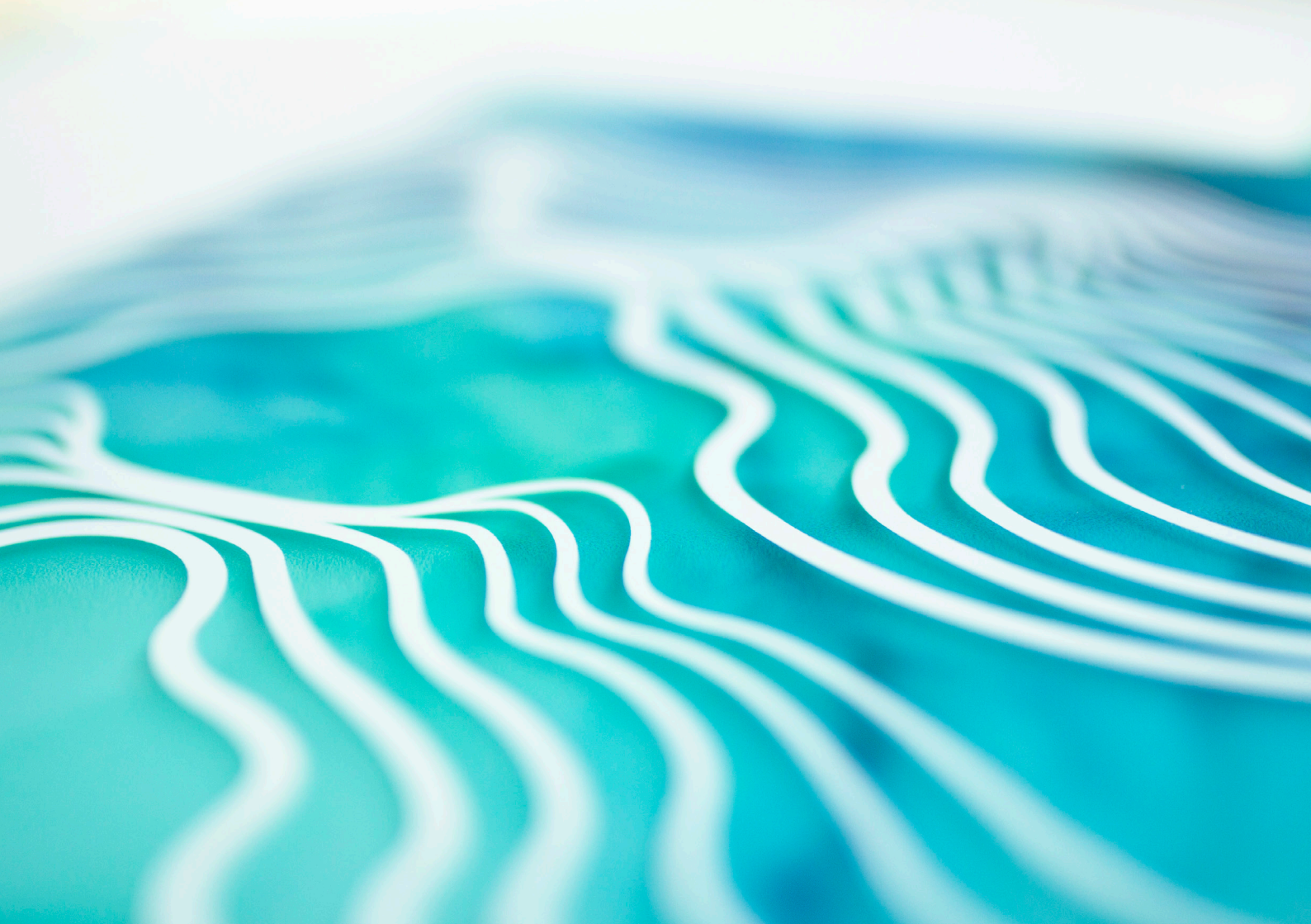
LUMINARI Glass is the jointly created exclusive glass product of S39 Hybrid Design and Rákósy Glass. The excellent quality of the collection is ensured by the many decades of professional experience, thorough designer and developer work, reliable raw materials, and precise machining.

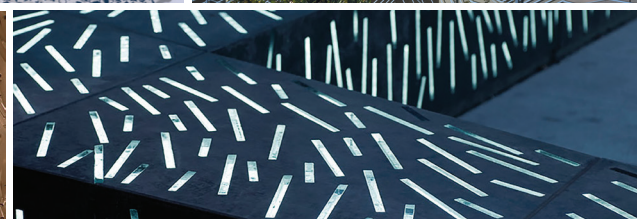
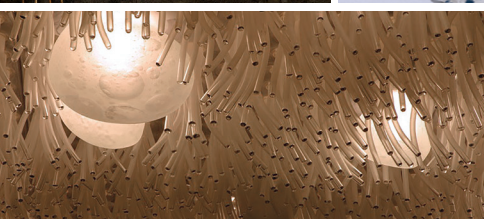
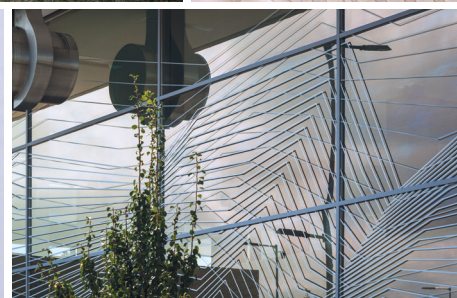
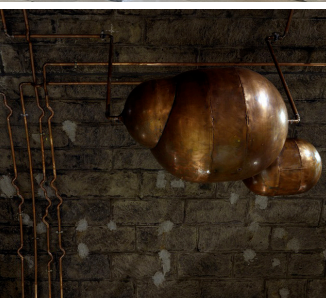
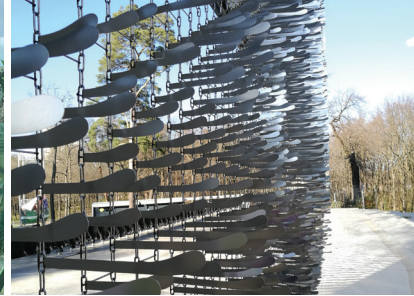
The product is suitable for the implementation of customized, unique solutions in exterior and interior spaces alike, but alongside that, also possesses elements in standardized sizes that are ready for installation, such as doors, shower walls, and spatial separators.

In addition to having high visual value and elegance, LUMINARI Glass is a durable, easy to maintain, and reliably stable component element of exterior and interior environments alike.

Photo: Dániel Ludmann, Benedek Bognár and Zsuzsanna Simon
Award: Hungarian Design Award, 2015







#S39HDSELECTION

- 2004** *Arena Savaria, facade lighting elements*
- 2005** *MŰPA VIP room, sculptured ceiling lighting*
- 2006** *Re:orient group – architecture of hidden networks, Hungarian pavilion, Venice Biennale of Architecture*
- 2007** *Lánchíd 19 design hotel, glass facade*
- 2007** *V45 Átrium Park Office Building, facade lighting elements*
- 2009** *Csücsülőkő – lighted public space concrete object, Pécs, Europe's Cultural Capital*
- 2010** *AER – dynamic system of facade elements, facade of Magyar Színház (Hungarian Theater)*
- 2012** *Stereogram mosaic, Műcsarnok (Exhibition Hall)*
- 2012** *Jászberény Kindergarten, facade glass mosaic*
- 2012** *Jászberény Kindergarten, open air interactive object, "MOMO the magic-eyed"*
- 2012** *Design tender submission to Museum of Industrial Art, machining of facade concrete surface*
- 2012** *MUKI Light – lighted concrete paving system, Monor*
- 2013** *Caltrope – experimental bioarchitectural structure, product development*
- 2013** *Memorian, active spatial and audio installation, Holdvölgy Pincészet (Winery) of Mád*

2014	<i>AER – dynamic facade element system, the gateway of the Nagyerdei Open Air Theatre of Debrecen</i>	2018	<i>CORDIA condominiums, lobby and hallway interior design</i>
2015	<i>MUKI Light – lighted concrete paving system, Hungarian Pilgrim's Way, Kalocsa</i>	2018	<i>Váci Greens public space installation, design concept</i>
2015	<i>Paulay Ede street flat, interior decorating project</i>	2019	<i>NEON Hostel, interior design plan</i>
2016	<i>Liget lightbox – modular media box, City Park</i>	2019	<i>Seoul International Book Fair, Hungary Pavilion, manufacturing design</i>
2016	<i>ZSILIP, Újlipótváros Synagogue developmental concept</i>	2020	<i>Budapest Airport passenger piers, glass railing foil decoration</i>
2016	<i>Dagály Strandfürdő (Public Swimming Pool) public space artistic tender</i>	2020	<i>LUMINARI Glass elevator covering at National Széchényi Library</i>
2016	<i>Tópark residential park, uniquely worked concrete support wall</i>	2020	<i>Károlyi-Csekonics palace, LUMINARI Glass staircase glass surfaces</i>
2016	<i>Pleasure Factory, „experience factory” at Sziget Festival</i>	2020	<i>Budapest family house, interior design</i>
2017	<i>Concrete-totem, Kreinbacher Winery</i>	2020	<i>„Beauty Space” multi-functional salon in Budapest, interior design</i>
2017	<i>Private house in Győr, interior design and facade design</i>	2020	<i>DUNAFERR visitor center, design concept</i>
2017	<i>Balatonfüred train terminal, glass facade graphics</i>	2020	<i>Existing shopping center, facade transformation plan</i>
2017	<i>Karcag train terminal, glass and concrete design elements and surfaces</i>	2020	<i>Existing Budapest hotel, facade transformation plan</i>
2017	<i>Béke square public space clock, plan</i>	2021	<i>Budapest villa building decorative concrete surfaces</i>
2017	<i>Marina Part residential park, lighted concrete building number objects</i>	2021	<i>Office building of Bánáti + Hartvig Architects, design concrete entrance element</i>
2018	<i>Paks City Museum, structured concrete support wall</i>	2021	<i>Balaton weekend house, unique concrete surfaces</i>

AWARDS

- 539 Hybrid Design** *Design Management Award, 2018
Millenium Award by the Hungarian Intellectual Property Office for the effective growth and protection of intellectual property, 2015
New Generation, Young People for the Young Award, innovation category, nominee, 2014*
- Hard Rock Hotel Budapest** *Public space of the year, nomination, 2020
Designed Hotel Project of the Year, 2018*
- PIER 1 passenger pier** *Public space of the year, nomination, 2020*
- Memorial Garden of Olaszliszka** *Architizer A+ Award Special Mention, 2019*
- Graphisoft Park entrance building** *Mies van der Rohe Award nomination, 2019
Big SEE Award nomination, 2019
Budapest Architectural Award, 2018
Media Architectural Award nomination, 2018
New Real Estate Development of the Year, 2017*
- Salgótarján Beszterce square** *Media Architectural Award finalist, 2019
Engineering facility of the year, 2018*
- Kapás21** *Real Estate Development of the Year, 2018*
- Caltrope** *Ocean Exchange finalist, 2018
Hungarian Design Award, 2014
Jacques Rougerie Foundation's Award 2013*
- Ghetto Memorial Wall of Dohány street** *Budapest Architectural Award, nomination, 2015*
- Luminari Glass** *Hungarian Design Award, 2015*
- MUKI PIX lighted covering system** *Mikser Festival, Community Design Award, 2014
Hungarian Design Award, 2013
Blue Cube Innovation Award, 2013*

Lánchíd 19 design hotel

*Pro Architectura Award, 2008
European Hotel Design Awards, 2008
BIO21 Awards, Biennale of Industrial Design, 2008
Hungarian Design Award, Homo Lumens MMVII, 2007
Hungarian Design Award, 2007
DesignBoom, Bright Led, 2007*

MŰPA VIP hall

*BIO20 Awards, Biennale of Industrial Design, 2006
Hungarian Design Award, Special Award of Council of Hungarian Design, 2005*





TEAM

ANNA BARÓTHY

lead designer, owner

The hybrid nature of the team is founded upon the experimental attitude of the lead designer. Anna Baróthy's interests and character made it self-evident that the studio she founded would and has become capable of employing the most diverse of materials in large scale architectural applications, with a designer perspective.

"I am convinced that objects exist in conjunction with their environment; consequently, we always design by concentrating on the effect, thinking in terms of systems.

In our digitized world, a confident handling of matter and a complex perspective on practical implementation turns into a special form of knowledge. For me, the traditional experience of handcrafting goods and the opportunities that are inherent in high-tech technologies simultaneously produce an exciting area to operate in."



VERA KRAUTH
project manager, architect

"As an architect, being a project manager in the S39 Hybrid Design team presents a varied challenge: it requires decisive nature and flexibility at the same time, in addition to a sensitive, attentive attitude. I value when we pay special attention to working out the details as we implement projects, this way, we can offer added value to the work, something that truly makes them come to life."



DÓRA SZEIDL
Project manager, product designer, ceramist

"For me, S39 Hybrid Design is a workshop where we work in numerous fields, from object to architect design. I think it is very exciting when we pay close attention to our work from the development of the concept all the way to the final moment of installation, and also monitor its post-installation fate. Of particular value, the studio also offers educational opportunities to young designers to get involved in our work. This is how I became a member of the team."



ANITA POZNA
project manager, architect

"A significant proportion of my previous jobs consisted of interior design projects, so it is particularly exciting that I also play an active role in the team's architectural-design themed design projects. The studio's point of view – namely, that a strong focal point of each project is the context itself, as well as the fact that the organic coexistence of existing and newly designed elements plays a special role."



ANITA POZNA
architect

MÁRTON SZALAI
designer

DÓRA SZEIDL
designer

CSABA PINTÉR
architect

ANNA BARÓTHY
lead designer

VERA KRAUTH
architect

GITA ELEK
graphic designer

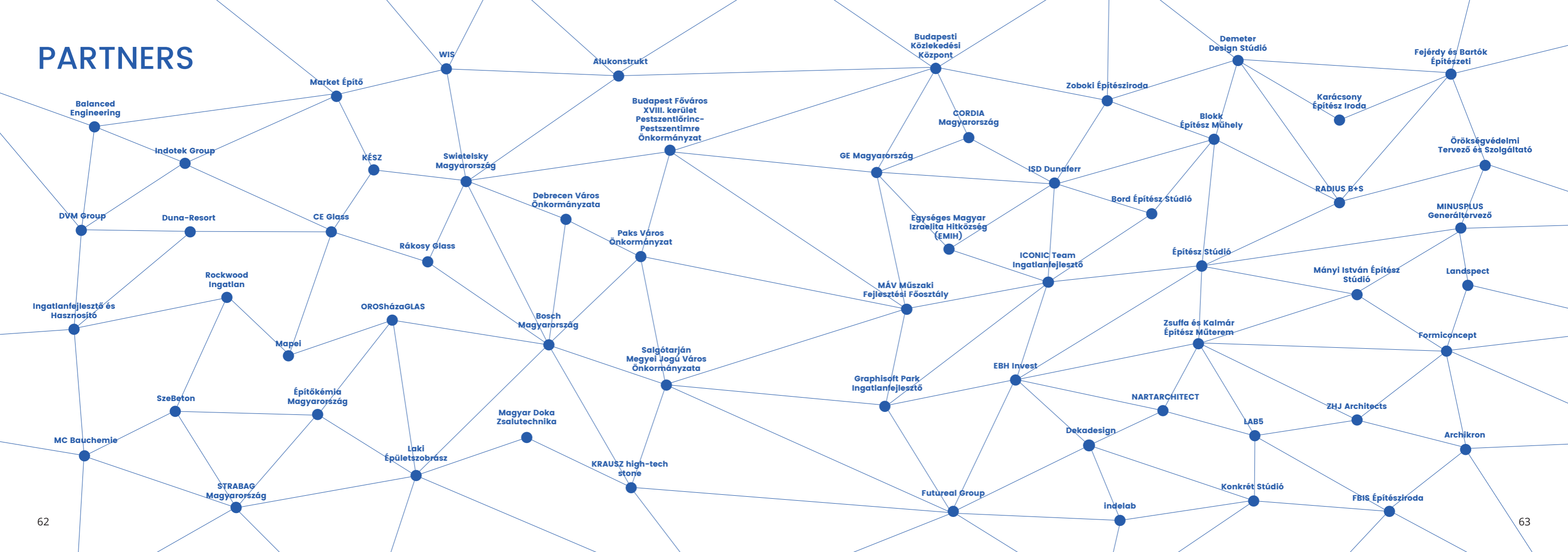
SIMON KŐSZEGI
architect

KATA SZALONTAI
interior designer

ZSUZI MOLNÁR
communication

MÁRIA ERCSEI
finance

PARTNERS





CONTACT US



ANNA BARÓTHY

lead designer, owner

anna@s39.hu



ANITA POZNA

architecture, interior design

anita@s39.hu



VERA KRAUTH

*architecture, public space design,
facade design*

vera@s39.hu



DÓRA SZEIDL

product design, implementation

dora@s39.hu



1074 Budapest,
Szövetség street 39.



posta@s39.hu



+36303368329

PUBLISHING INFORMATION

MANAGING PUBLISHER

S39 Hybrid Design Kft., Anna Baróthy

EDITORS

Zsuzsi Molnár, Gabriella Németh

GRAPHIC DESIGN

Gita Elek

PHOTO

Gergely Besenyei, Benedek Bognár and
Zsuzsanna Simon, Tamás Bujnovszky, Attila
Glázer, Gábor Kardos, Dániel Ludmann, Márk
Mervai, Tamás Réthey-Prikkel

TRANSLATION

András Balázs

PRINTING

digitalpress Kft.
2021

